

DESCRIPTION

- Metal construction with various finishes identified by suffix
- Single-Handle Non-Pressure Balance Shower, has brass construction with zinc, polymer, and steel components.
- Includes valve, showerhead, arm, and flange
- 4 port valve body connection are 1/2"
- Hot and cold indicator icons

OPERATION

- Lever style handle
- Temperature controlled by 110° arc of handle travel
- Pull open, push lever to close valve

FLOW


- Showerhead is limited to 1.75 gpm (6.6 L/min) at 80 psi

CARTRIDGE

- 35mm ceramic disk cartridge
- Nonmetallic/nonferrous and stainless steel materials

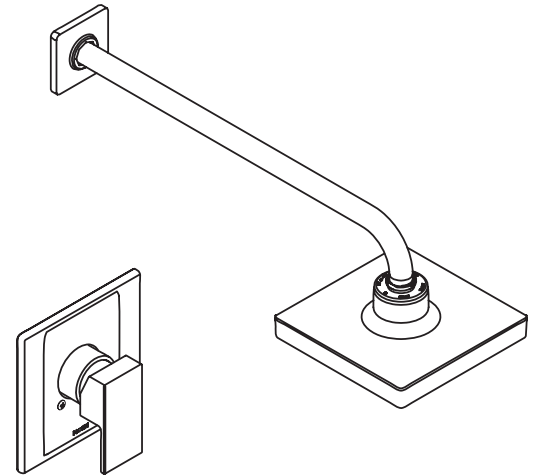
STANDARDS

- Designed to meet GB standards

- ADA  for lever handle

WARRANTY

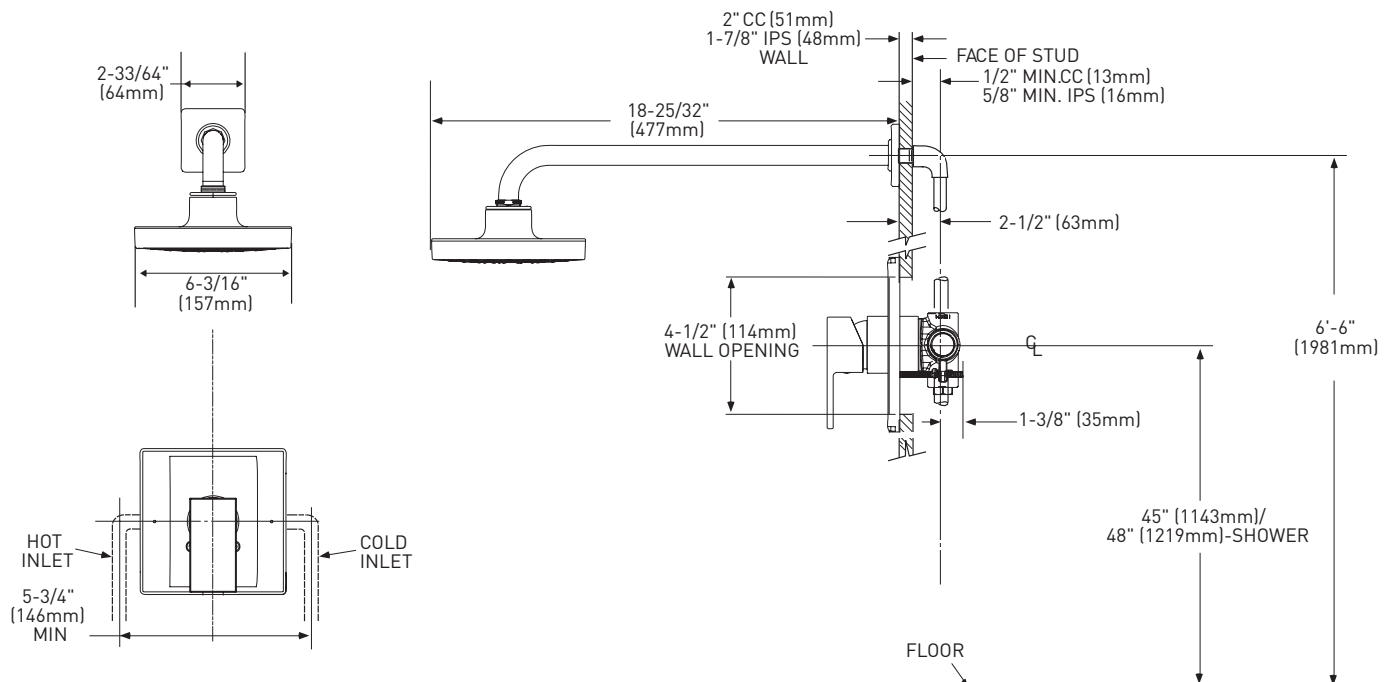
- Lifetime limited warranty against leaks, drips and finish defects to the original homeowner
 - 10 year limited warranty when used in a multifamily installation
 - 5 years limited warranty when used in a commercial installation
- Visit www.moen.com/support for complete details and limitations



KYVOST™

Single-Handle Non-Pressure Balance Shower

MODELS: 2784 / 2784BL



CRITICAL DIMENSIONS DO NOT SCALE