

DESCRIPTION

- Polymer construction with various finishes identified by suffix
- Showerhead Series, has Polymer construction with 1/2" IPS connection stainless steel and brass components
- Nonmetallic spray face and shell
- Brass swivel ball assembly

OPERATION

- Single function

FLOW

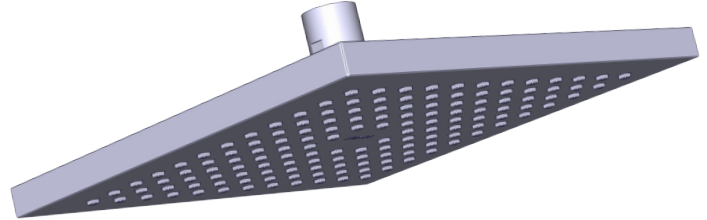
- Showerhead is limited to 1.3 gpm (4.9 L/min) at 45 psi, 1.75 gpm (6.7 L/min) max at 80 psi

STANDARDS

- Third party certified to WaterSense® for showerhead only
- Third party certified to ASME A112.18.1/CSA B125.1, and all applicable requirements referenced therein for showerhead only

WARRANTY

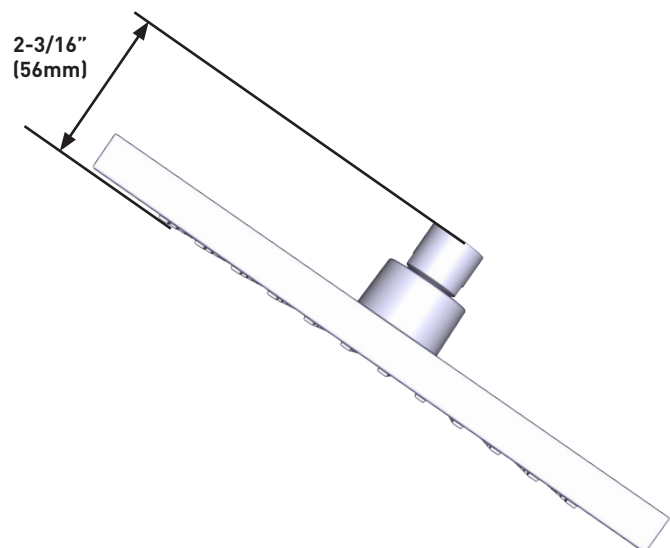
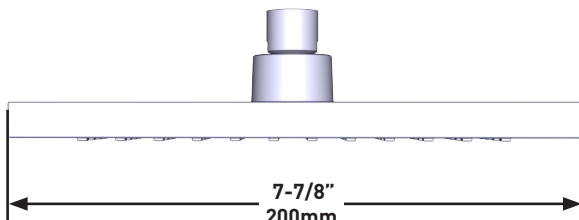
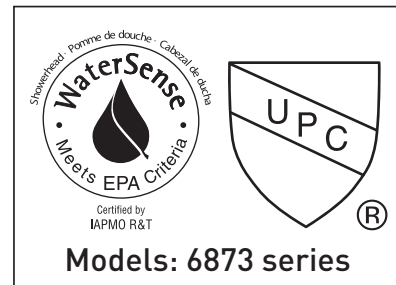
- Lifetime limited warranty against leaks, drips and finish defects to the original homeowner
- 10 year limited warranty when used in a multifamily installation
- 5 year limited warranty when used in a commercial installation



Medora

One-Function Rainshower

MODELS: 6873 Series



CRITICAL DIMENSIONS DO NOT SCALE