

## DESCRIPTION

- Showerhead is plastic construction while other elements are of metal construction
- Includes valve, showerhead, arm, and flange for model 69543
- 4 port valve body connectors are 1/2"
- Hot and cold indicator icons are etched into escutcheon

## OPERATION

- Lever style handle
- Pull open, push lever to close valve
- Temperature controlled through 110° arc of handle travel

## FLOW

- Showerhead is limited to 1.3 gpm [4.9 L/min] at 45 psi, 1.75 gpm [6.7 L/min] max at 80 psi

## CARTRIDGE

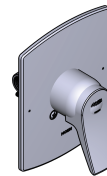
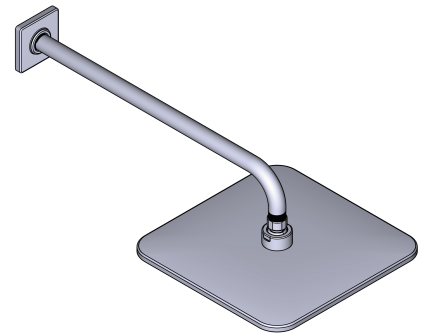
- 35mm ceramic disk cartridge
- Nonmetallic/nonferrous and stainless steel materials

## STANDARDS

- Third party certified to WaterSense® for showerhead only
- Third party certified to ASME A112.18.1/CSA B125.1, and all applicable requirements referenced therein for showerhead only

## WARRANTY

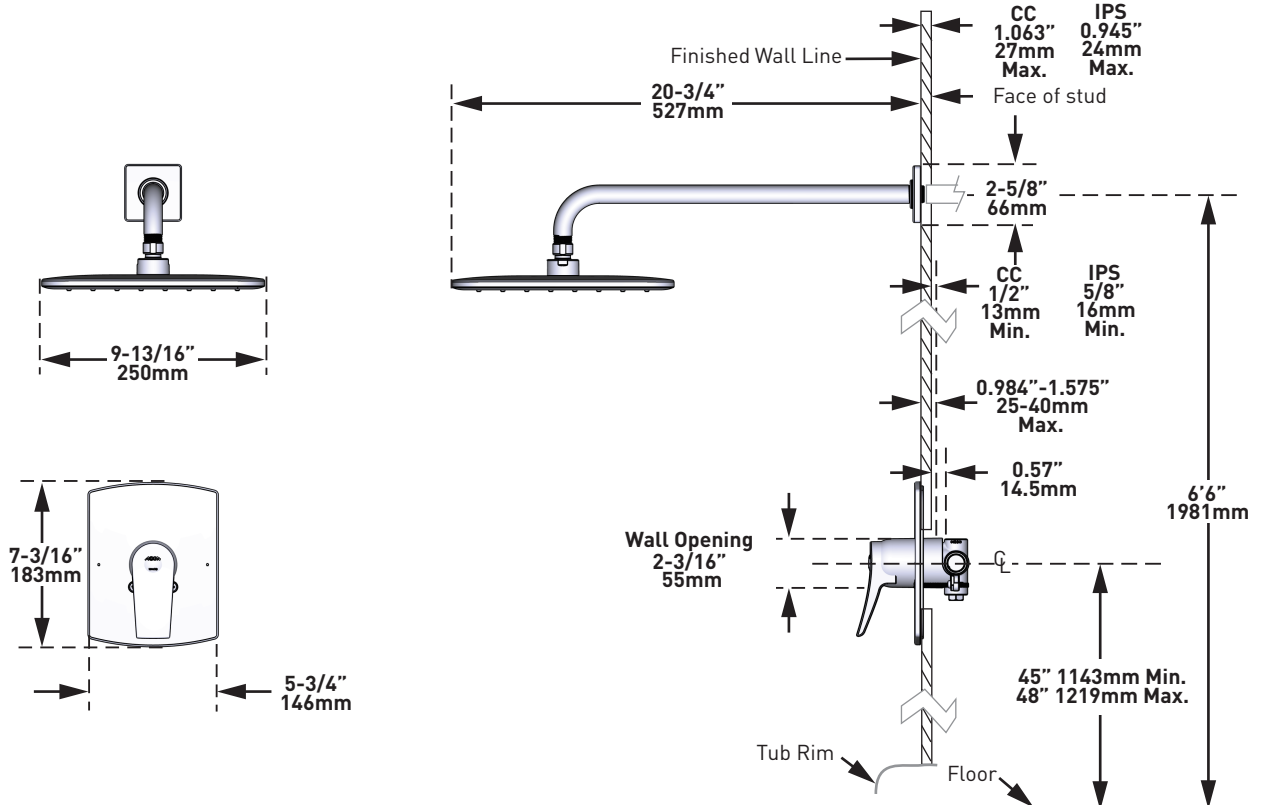
- Lifetime limited warranty against leaks, drips and finish defects to the original homeowner
  - 10 year limited warranty when used in a multifamily installation
  - 5 year limited warranty when used in a commercial installation
- Visit [www.moen.com/support](http://www.moen.com/support) for complete details and limitations



**Isabel™**

Single Handle Non-Pressure Balance Shower

**MODELS:** 69543 SERIES - Non P.B. Showerhead, Arm & Flange  
2541 SERIES - Valve & Trim Only



**CRITICAL DIMENSIONS** DO NOT SCALE