

DESCRIPTION

- Metal construction with various finishes identified by suffix
- G1/2" inlet connections

OPERATION

- Lever style handle
- Pull-on/Push-off
- Temperature controlled through 100 arc of handle travel

FLOW

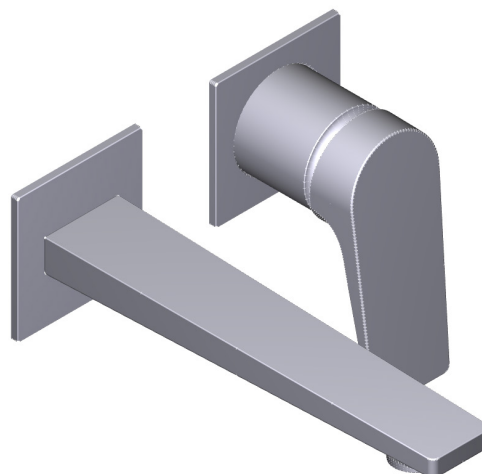
- 1.2 gpm max (4.5L/min) at 60 psi

CARTRIDGE

- Duralast cartridge design

WARRANTY

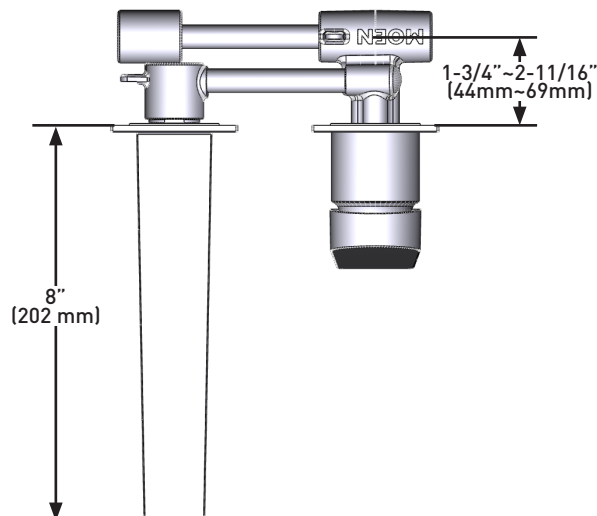
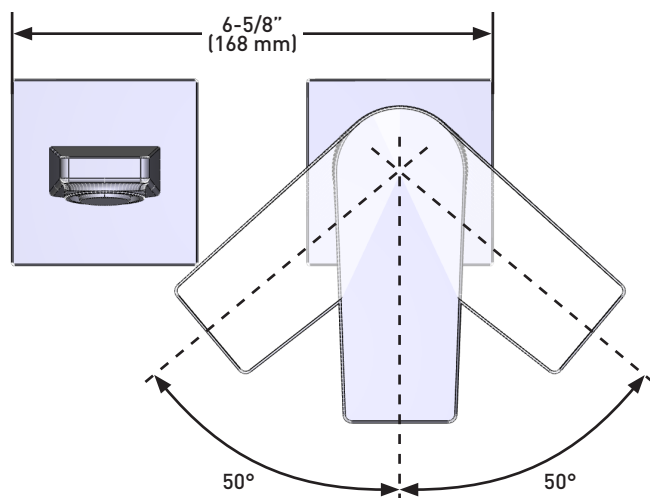
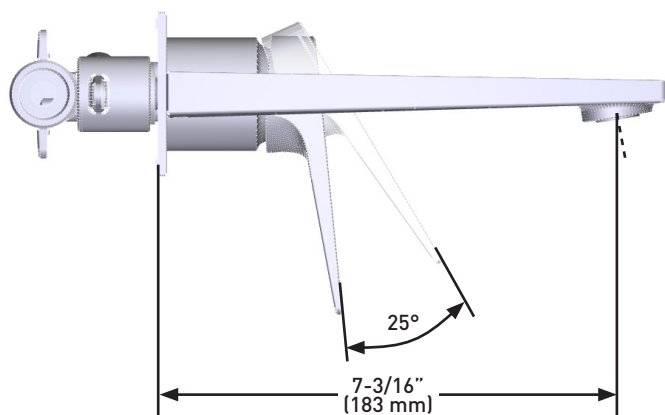
- Lifetime limited warranty against leaks, drips and finish defects to the original consumer purchaser
- 5 year warranty if used in commercial installations



BERAT

Single-Handle Wall-Mount Lavatory Faucet

MODELS: TS6742 Series



CRITICAL DIMENSIONS DO NOT SCALE