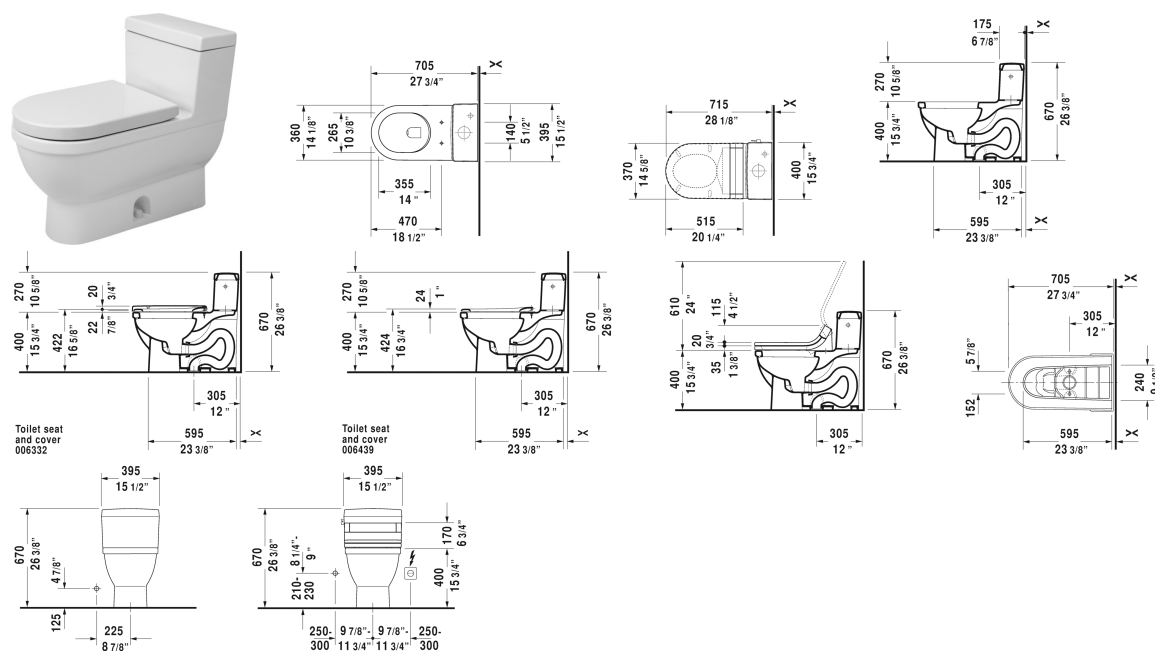


Starck 3 One-Piece toilet # 212001..01

| < 14 5/8" Inch > |



One-Piece toilet	Dimension	Weight	Order number
suitable for SensoWash Starck, syphonic, 12" rough-in, with Single Flush mechanism, with side lever, 3" flapper valve, vertical outlet, cUPC listed, 1.28 gpf			
Colors			
00 White 20 HygieneGlaze (an antibacterial ceramic glaze that provides almost indefinite effectiveness)			
Variant			
●	14 5/8" x 28 1/8" Inch	114.9 lb	212001..01
Infobox			
Passende SensoWash Dusch-WC-Sitze siehe Matrix auf Seite xxx			
Mounting set for One-Piece and Two-Piece toilets, outlet 3/8" - male thread, wall connection 1/2" - female thread, 1/2", North American version			
	17 3/4" Inch	1.1 lb	001417
Suitable products			
Toilet seat and cover elongated, hinges stainless steel, removable, with slow close,			006339

Starck 3 One-Piece toilet # 212001..01

|< 14 5/8" Inch >|

<p>SensoWash Starck shower-toilet seat for Starck 2, Starck 3 and Darling New* remote control included, power actuated lid and seat, rear-, front and oscillating wash, individual adjustment of water-, air- and seat surface temperature as well as nozzle position and jet strength, self-cleaning wand, 2 individually programmable user profiles, night light, Quick release: easy seat unit removal and attachment, on / off-button, cIAPM0@ELECTRICAL, 14 5/8" x 20 1/4" Inch</p>	14 5/8" x 20 1/4" Inch	610000
Toilet seat ring elongated, open front, hinges plastic, without slow close,		006431
Toilet seat ring elongated, open front, hinges plastic, with slow close,		006439
Toilet seat and cover elongated, hinges stainless steel, without slow close,		006332

All drawings contain the necessary measurements which are subject to standard tolerances. They are stated in inch & mm and are non-binding. Exact measurements, in particular for customized installation scenarios, can only be taken from the finished ceramic piece.